


# CoUnSiL

Videoconferencing Environment for Remote  
Interpreting of Sign Language in Higher Education

**Vít Rusňák**



 **Teiresiás** | Support Centre for Students with Special Needs



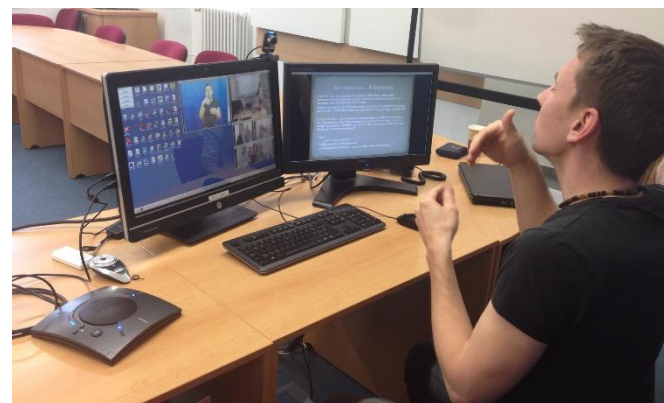
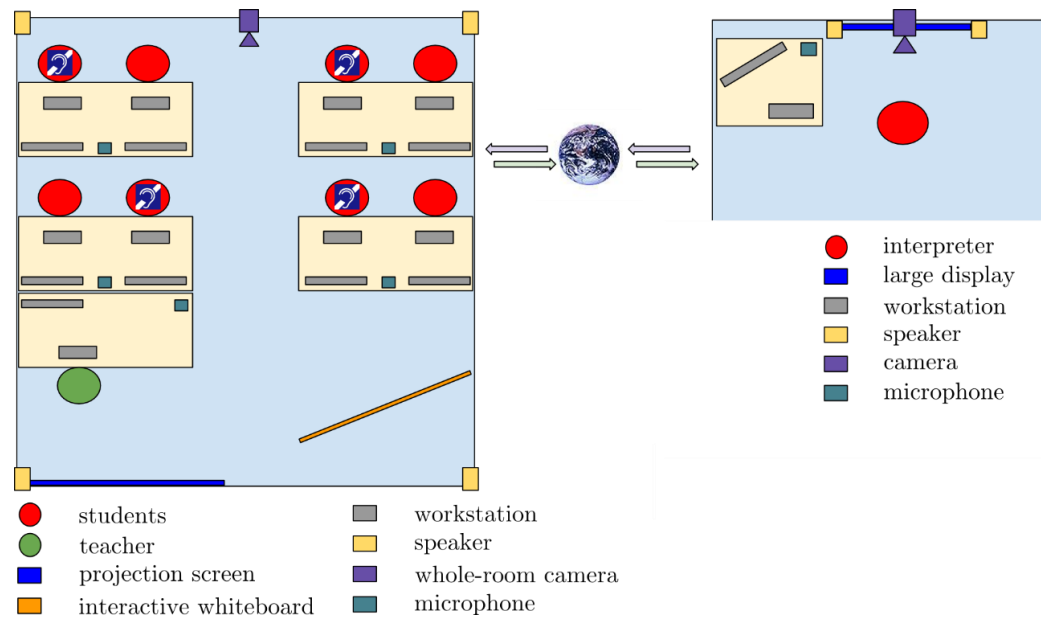
**SITOLA**  
The Laboratory of Advanced Network Technologies

# Introduction

*“There is the lack of qualified interpreters capable of interpreting highly specialized courses at universities.”*

- Existing tools are insufficient
  - Video quality fluctuates (Google Hangout, Skype, ...)
  - Expensive (H.323/SIP)
  - Missing special features such as *raising hand* or *user roles*
- Timeline
  - Since 2013: cooperation between Teiresiás and SITOLA laboratory at FI MU
  - 2014: Student’s project at FI MU – prototype implementation
  - 2015–2016: CESNET Development Fund

# Classroom topology

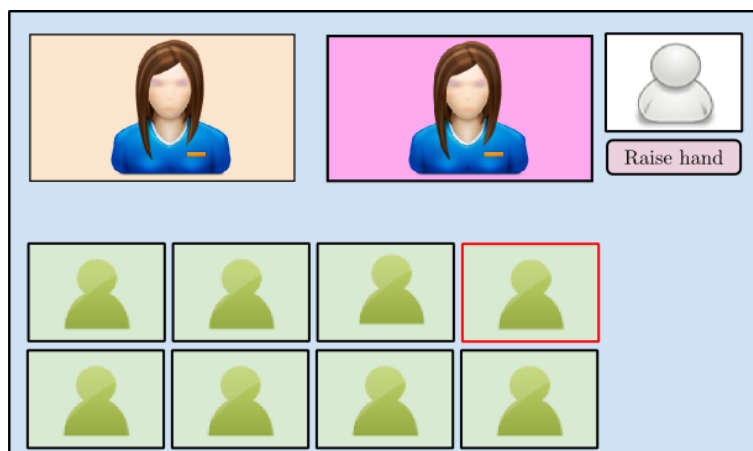


# Features

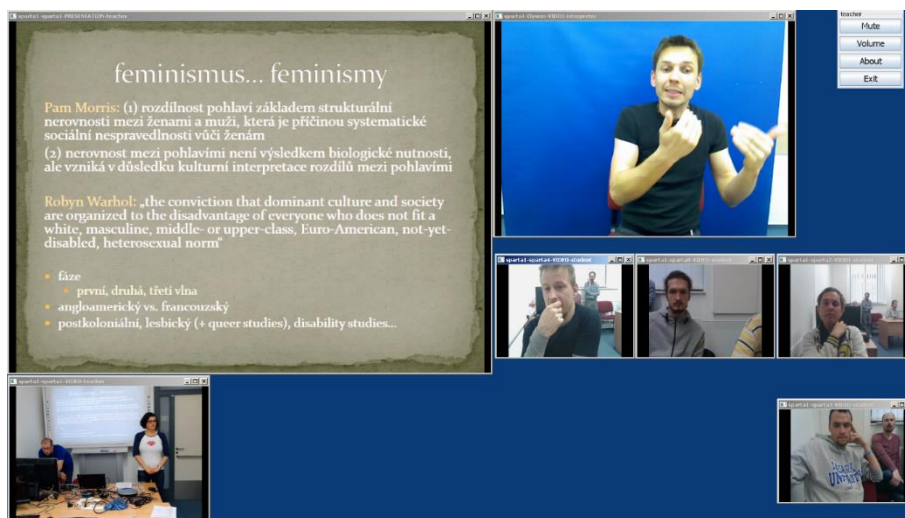
- Client-server architecture
- Roles: teacher, interpreter, student
- Up to 10 participants
- Multiple video streams (all-to-all), selective audio
  - Video resolution from 240×180 up to 640×480 pixels
  - Sustainable framerate (min. 25 frames per second)
  - Low latency (up to 200 ms)
- Presentation or other content from computer
- Based on commodity HW and existing SW tools
  - Web cameras, USB speakerphones
  - Windows, Linux, OS X
  - UltraGrid & CoUniverse

# CoUnSiL Client(s)

- Role-specific layout
- User-defined layouts
- *Raise hand and giving floor*
- Self-view



- |   |                     |   |                           |
|---|---------------------|---|---------------------------|
|  | teacher             |  | currently signing student |
|  | interpreter         |  | student's own image       |
|  | other deaf students |  | raise hand button         |



# User testing

- Simulated lecture scenario
- Held at Teiresiás seminar rooms
- Half-dozen of trials
- 20–40 minutes long
- 2–5 “students” + teacher + “remote” interpreter
- User feedback after the session
  - Suggestions for improvements
  - Advice for future work
  - Task prioritization



# Limitations

- Requires high-speed networks
  - Sorry, no WiFi ☹️
- Public IP address
- Up-to-date hardware
  - the more participants, the more powerful PC
  - Tailored to FullHD resolution (1920×1080 pixels)



# Conclusion

- CoUnSiL = videoconferencing system for sign-language interpretation
  - Low latency & high video quality & sustainable framerate
  - Up to 10 participants
- Use cases: lectures (primarily), seminars and discussions
- User-driven development (simulated lectures)
- Stable final version on July 2016
  - Open source software



Thank you for your attention.

**<http://sitola.cz/council>**

**rusnak@ics.muni.cz**